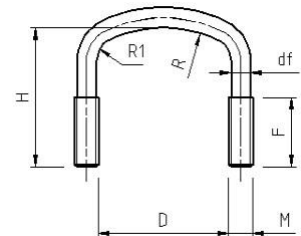
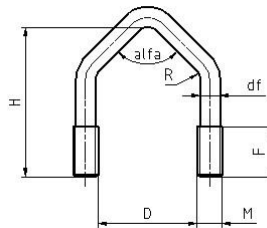
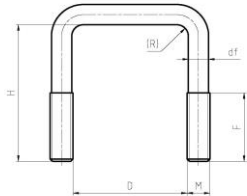


FILETTATURA ¹ ISO THREAD	DIAMETRO ² DIAMETER					
	> 5 ≤ 50	> 50 ≤ 100	> 100 ≤ 150	> 150 ≤ 300	> 300 ≤ 600	> 600
M4	±1	+1 -2	+1 -3			
M5	±1	±1	+1 -3	+1 -5		
M6	±1	+1,5 -1	+1 -3	+1 -4	+1 -6	
M8	±1	+1,5 -1	+1 -3	+1 -3	+1 -6	
M10	±1	+1,5 -1	+1 -2	+1 -3	+1 -4	
M12	±1	+1,5 -1	+1 -2	+1 -2	+1 -4	
M14	±1	±1	+1 -2	+1 -2	+1 -3	
M16	±1	±1	+1 -2	+1 -2	+1 -3	
M18		±1	+1 -1,5	+1 -2	+1 -3	
M20		±1	+1 -1,5	+1 -2	+1 -3	
M22		±1	+1 -1,5	+1 -2	+1 -3	
M24			±1	±1	+1 -2	
M27			±1	±1	+1 -2	
M30			±1	±1	+1 -2	



- 1) Per cavallotti con filettature speciali (UNC, UNF, UNEF, BSW, BSF) utilizzare i diametri nominali indicati come intervalli di applicabilità. *With non-ISO thread bolts (UNC, UNF, UNEF, BSW, BSF) consider the nominal diameters as ranges of applicability.*
- 2) Tolleranze da applicare alla quota "D" qualora priva di indicazione di tolleranza. *Apply tolerances to "D" dimension when no tolerance is indicated.*